



## Kerry Lee Kious

July 14, 1966 - January 5, 2026

Kerry Lee Kious, born Kerry Lee Newman, was born on July 14, 1966, at approximately 12:00 p.m. at Doctors Hospital of Modesto in Modesto, California. She was the cherished “Golden Nugget” child of Edmond Harold Newman and Shirley Ann Dedmon Newman.

Kerry attended Wilson Elementary School and Cooper Middle School before graduating from Fresno High School in 1986 with a general diploma. She later pursued her passion for beauty and self-care at Federico College, earning her manicurist certificate in 1990. Throughout her life, Kerry lived in several places that shaped her journey, including Modesto and Fresno, California; Ferron, Utah; Palm Springs, California; and Big Fork, Montana. Each place reflected a chapter of her adventurous and independent spirit.

In her professional life, Kerry managed a yogurt truck from 1986 to 1989 before dedicating herself to a career as a professional manicurist, a role she held with pride and skill for over 30 years. Her work allowed her to connect closely with others, offering not only beauty services but warmth, conversation, and care.

Kerry will be remembered for her resilience, her work ethic, and the meaningful connections she built throughout her life. Her story lives on

through her family and all who knew and loved her.

Kerry was preceded in death by her grandparents Harold & Helen Newman, Earl "Wilbur" & Robbie Dedman, aunt Lynn Moffatt (William), Helen Doherty (Robert), & uncle Kenneth Hale.

Kerry is survived by her companion Steve Gordon, parents Edmond "Ed" & Shirley Newman, sister Kristy Newman, aunt Jacklyn "Earlene" Hale, cousins Mark Moffatt (Theresa), Keith Moffatt (Mary Kay Schaefers), Dirk Moffatt, Monika Brandstetter (Phil), Theresa Doherty, Gary Hale (Teresa), Robert Hale (Mary), Linda Lamb (Taz), niece Lauren Urzua, & nephew Korbin Urzua.

Kerry leaves behind many second-degree nieces & nephews, extended family, and friends that she has opened her heart and home.

# Previous Events

## Celebration of Life

JAN **29**. 11:30 AM (PT)

Chapel of the Light  
1620 W. Belmont Avenue  
Fresno, CA 93728  
michael@chapelofthelight.com  
<http://www.chapelofthelight.com>

# Tribute Wall



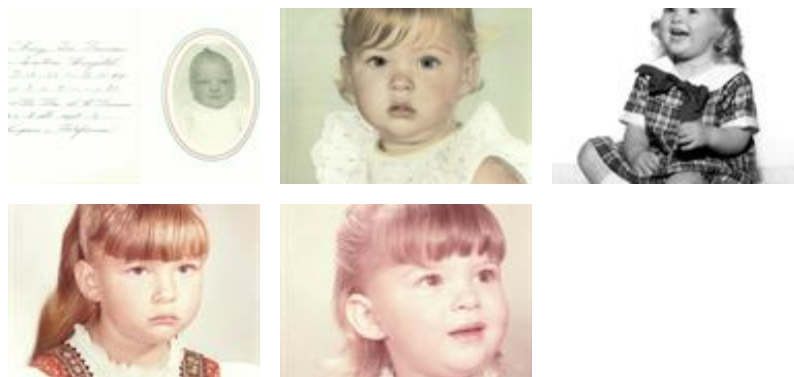
“ Chapel Of The Light created a Tribute Video in memory of Kerry Lee Kious



Chapel Of The Light Funeral Home and Mausoleum - January 29 at 04:14 PM



“ 121 files added to the album Life Tributes



Chapel Of The Light Funeral Home and Mausoleum - January 28 at 11:14 PM

BG

Every time I visit the sunflower farm . I will remember taking Kerry . It was our BFF Day .i will cherish it for a lifetime time . Brenda Gipson already misses you .

Brenda Gipson - January 31 at 11:05 AM